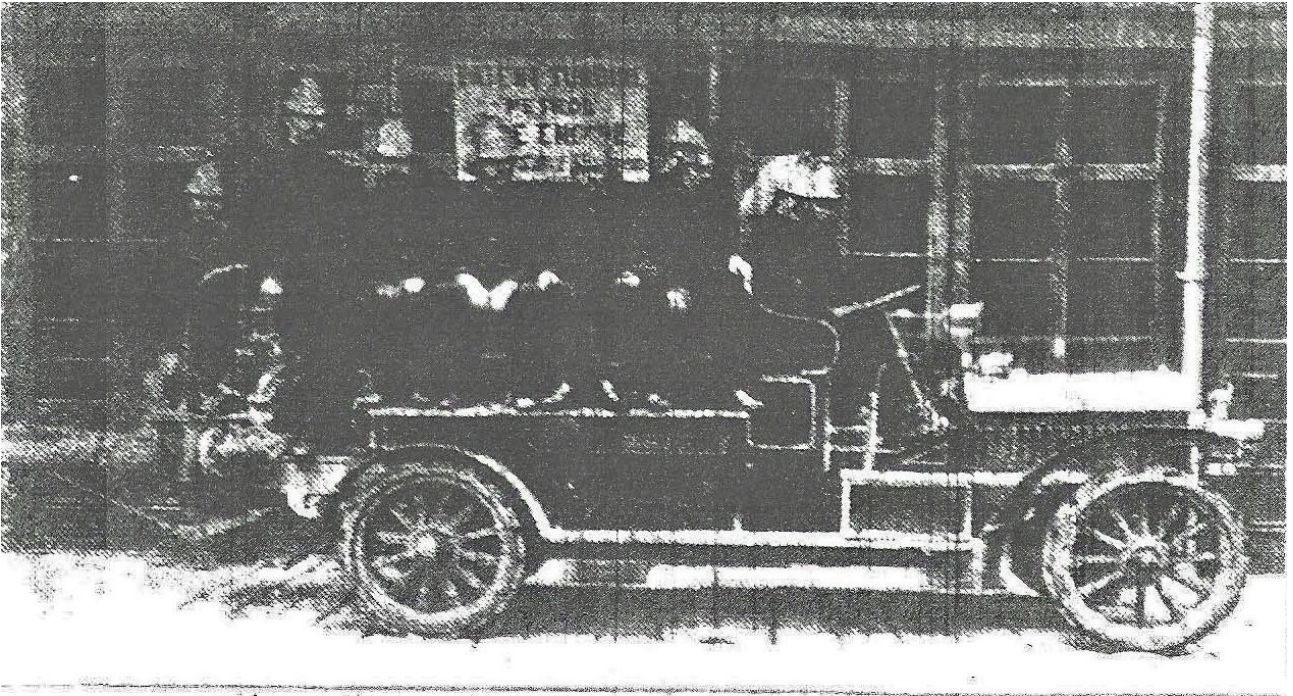


A Novel Fire Engine



The new patent turbine fire engine was bought to Sheffield last evening for the inspection of the Watch Committee and Fire Brigade, was tested on the canal bank this morning by the Chief Constable, the Chairman of the Watch Committee and Chief Officer Frost. Great satisfaction was expressed at the splendid results obtained from the novel "steamer" and this evening it is to be inspected by the Watch Committee.

The engine has a petrol-driven turbine pump which can be brought into immediate action by disconnecting the driving mechanism and applying its energy to the pump.

The steamer, which has a 40 to 60 h.p., motor can attain 30 miles per hour.